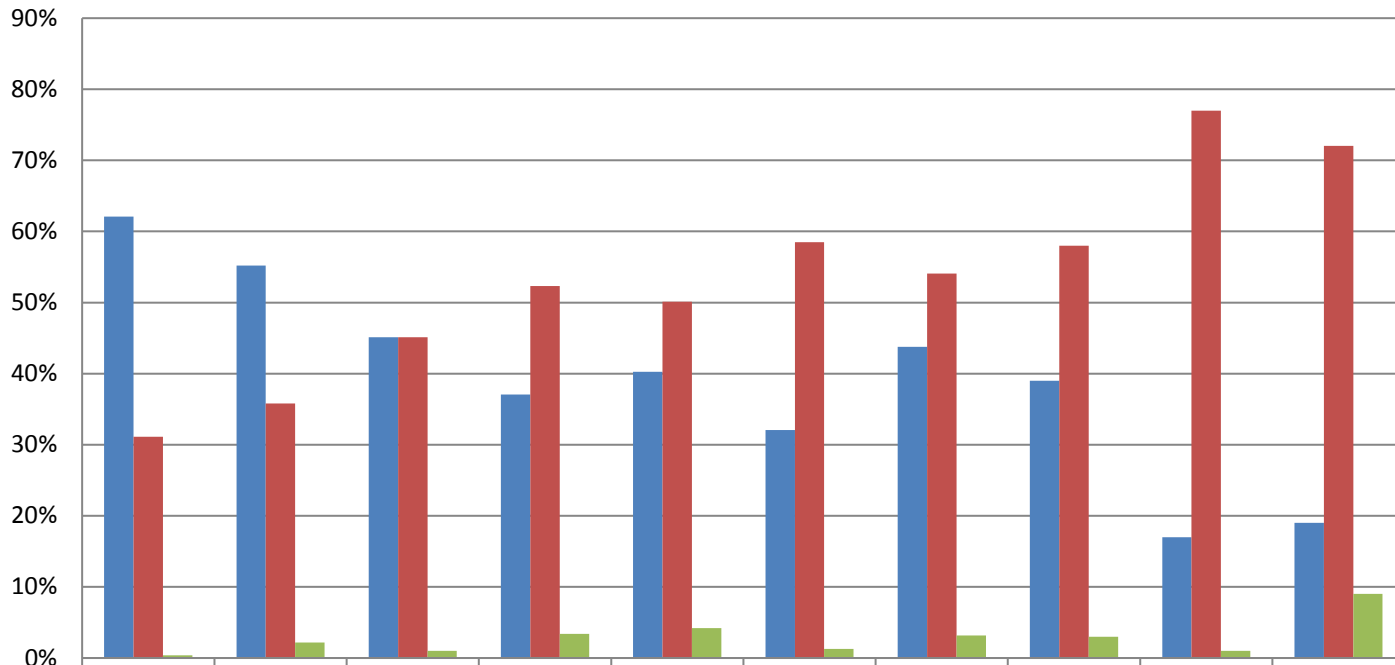
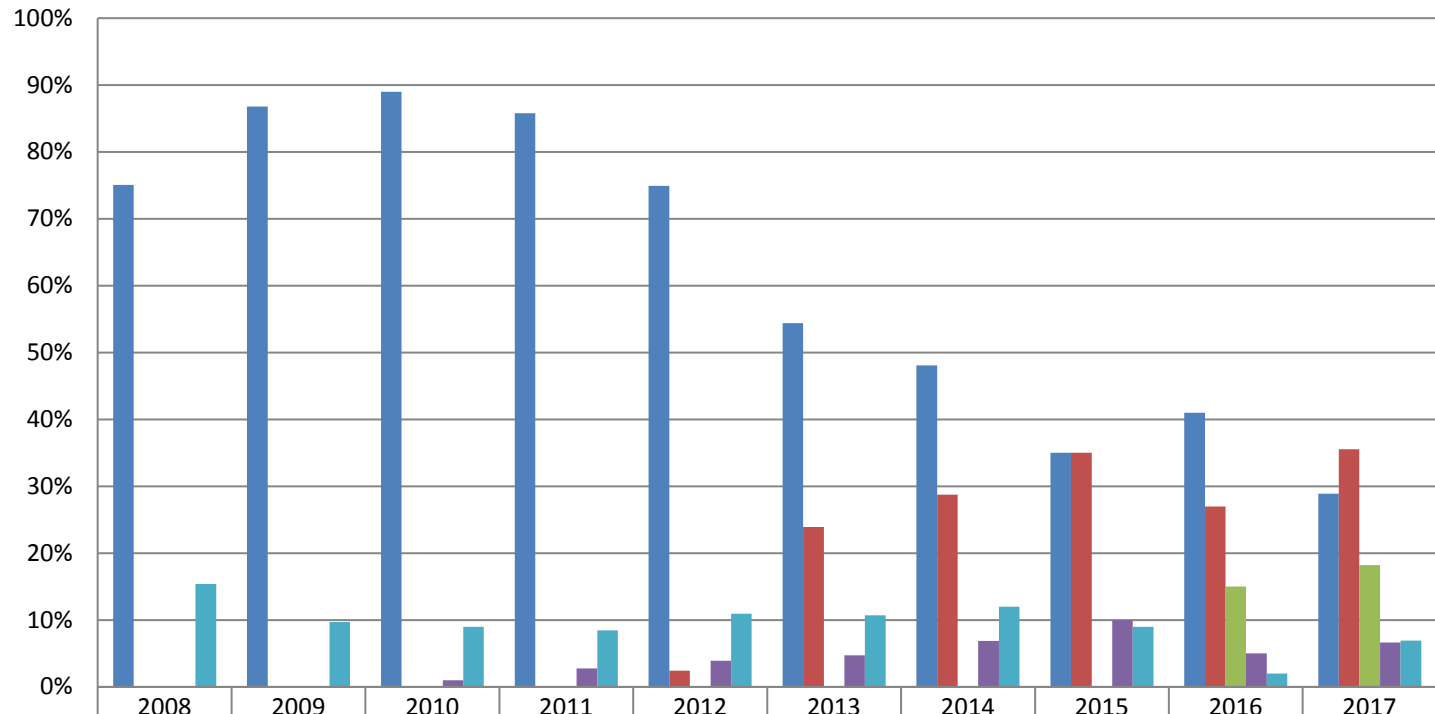


What form of electronic communication do you use most often?



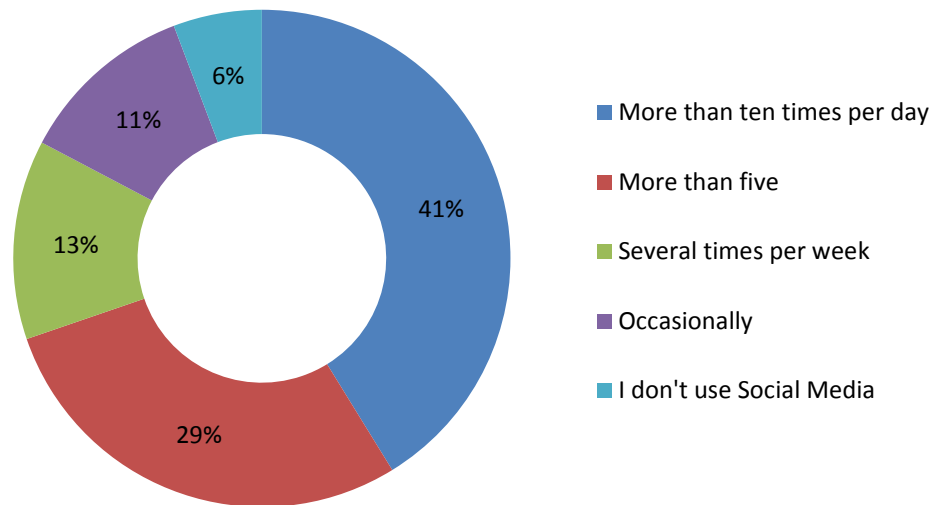
■ Email	2008	2009	2010	2011	2012	2013	2014	2015	2016	2017
■ Text Messaging	62%	55%	45%	37%	40%	32%	44%	39%	17%	19%
■ Social Media Apps	31%	36%	45%	52%	50%	58%	54%	58%	77%	72%
	0%	2%	1%	3%	4%	1%	3%	3%	1%	9%

Which social networking platform do you use *most* often?

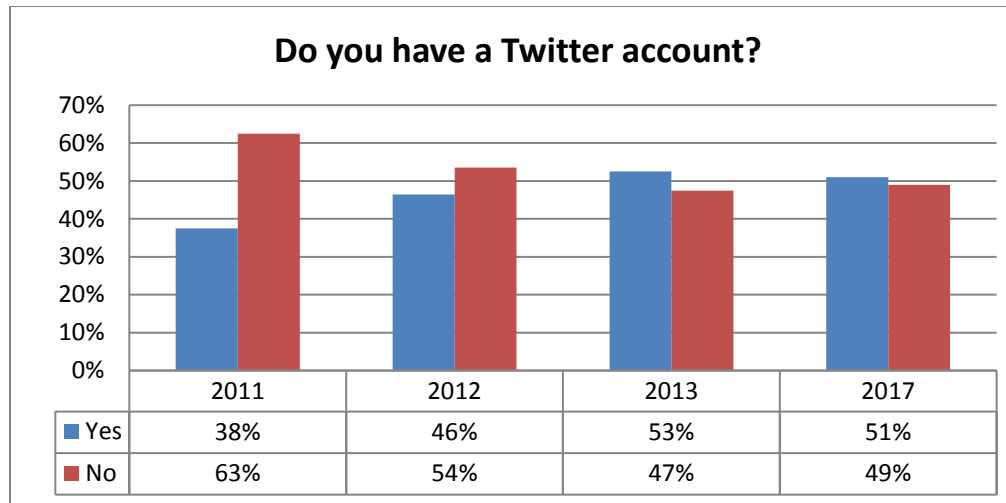


	2008	2009	2010	2011	2012	2013	2014	2015	2016	2017
Facebook	75%	87%	89%	86%	75%	54%	48%	35%	41%	29%
Instagram					2%	24%	29%	35%	27%	36%
Snapchat									15%	18%
Twitter			1%	3%	4%	5%	7%	10%	5%	7%
I don't use Social Media	15%	10%	9%	8%	11%	11%	12%	9%	2%	7%

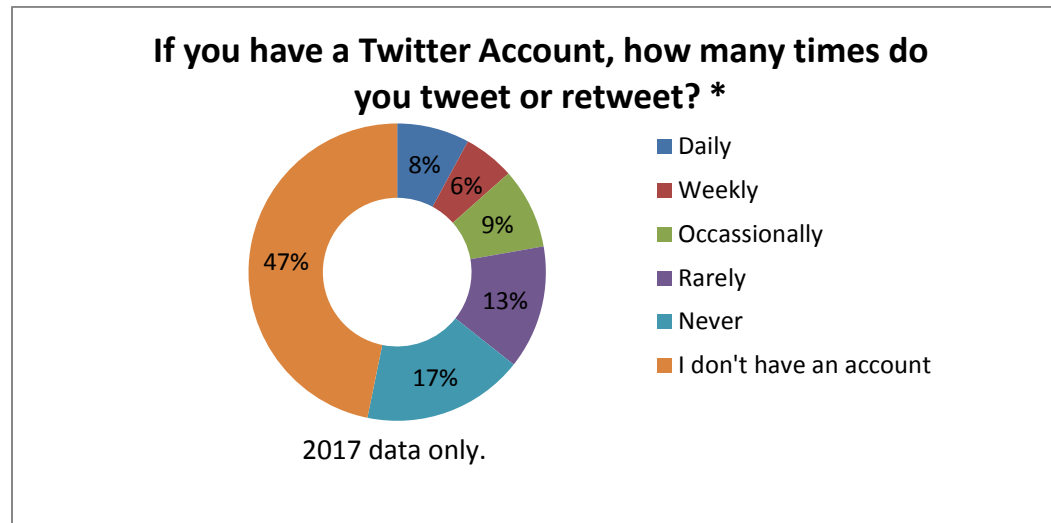
Approximately how often do you access the social networking platforms? (include all platforms, not just the ones you used most often) *



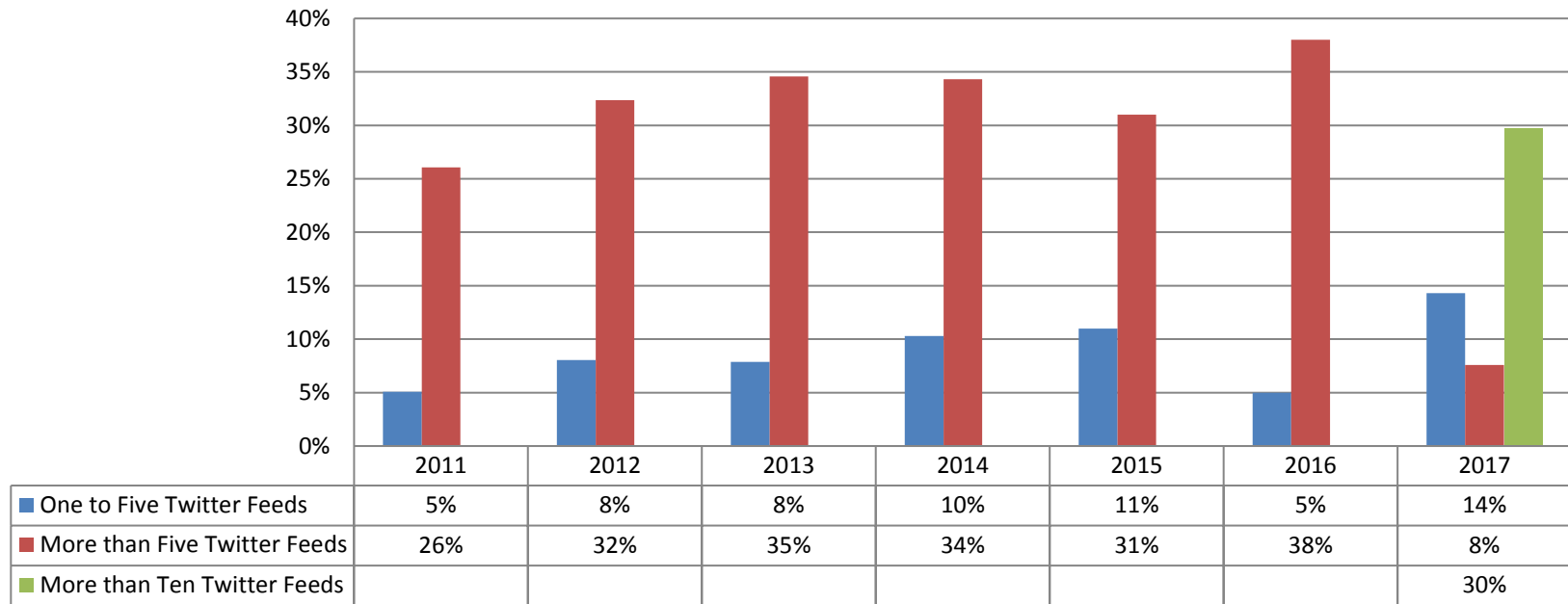
2017 data only.



This question was not included in 2014, 2015, and 2016.

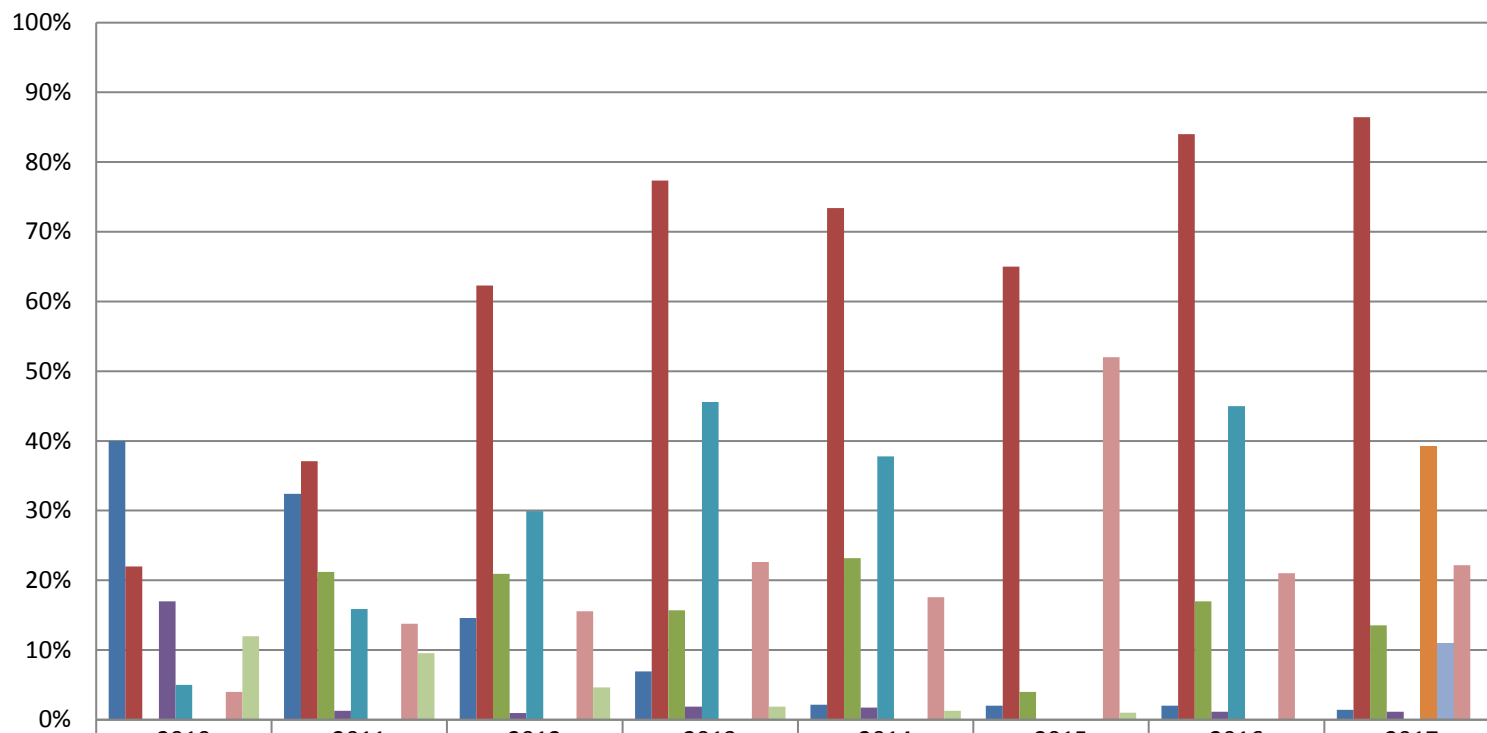


If you have a Twitter account, how many Twitter feeds do you regularly follow? *



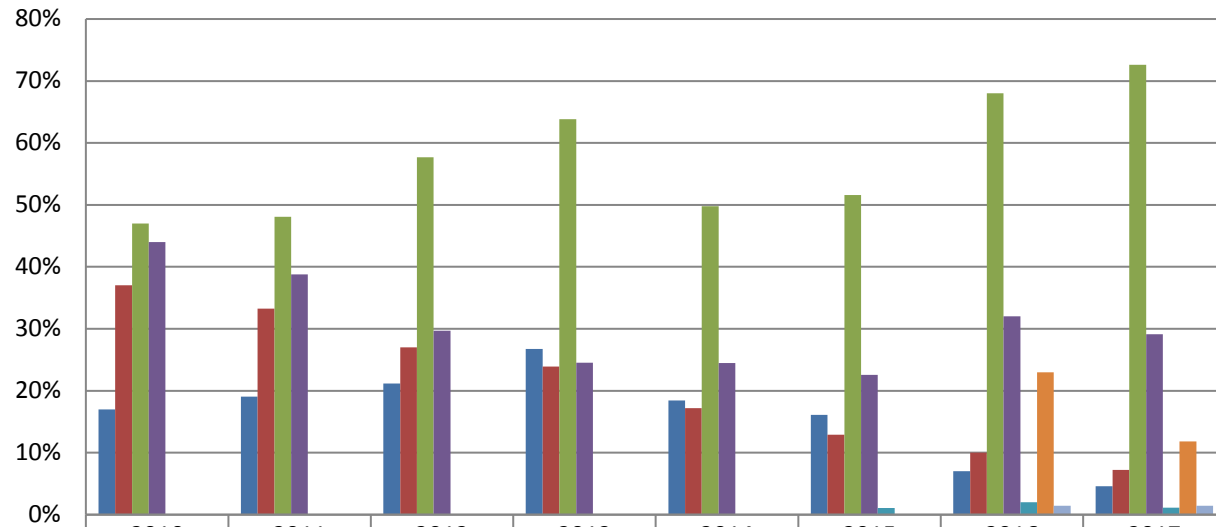
*In 2017, 49% of First Year students do not have Twitter accounts.

Which of the following devices, if any, do you own?



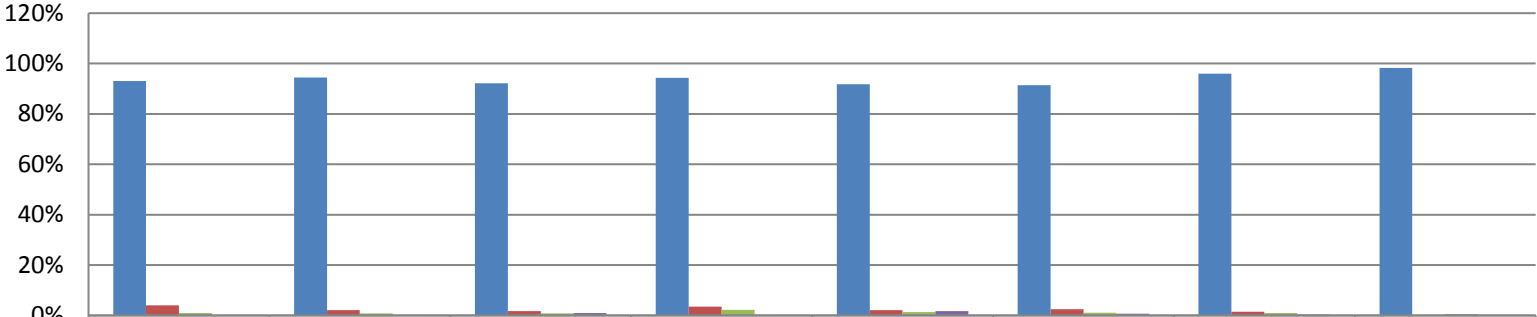
	2010	2011	2012	2013	2014	2015	2016	2017
Blackberry	40%	32%	15%	7%	2%	2%	2%	1%
iPhone	22%	37%	62%	77%	73%	65%	84%	86%
Android Phone		21%	21%	16%	23%	4%	17%	14%
Other Smart Phone	17%	1%	1%	2%	2%	0%	1%	1%
iPad or other tablet device	5%	16%	30%	46%	38%	0%	45%	
iPad								39%
Tablet Device other than iPad								11%
E-book reader	4%	14%	16%	23%	18%	52%	21%	22%
None	12%	10%	5%	2%	1%	1%	0%	0%

If you own a computer, please specify the type(s)



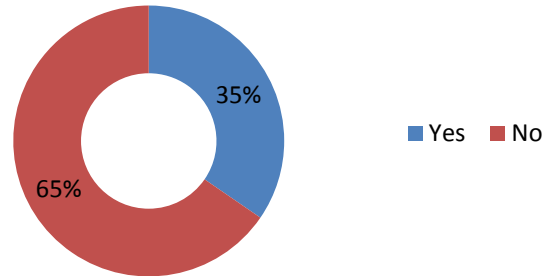
	2010	2011	2012	2013	2014	2015	2016	2017
Desktop-Mac	17%	19%	21%	27%	18%	16%	7%	5%
Desktop-PC	37%	33%	27%	24%	17%	13%	10%	7%
Laptop-Mac	47%	48%	58%	64%	50%	52%	68%	73%
Laptop-PC	44%	39%	30%	25%	24%	23%	32%	29%
Netbook						1%	2%	1%
Tablet							23%	12%
None							1%	1%

Which search engine do you use most often?



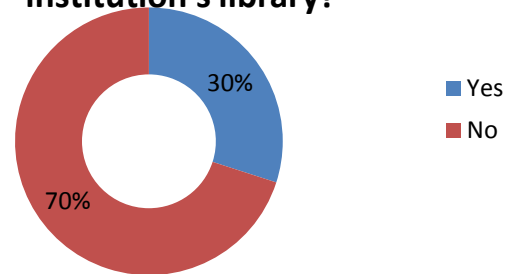
	2010	2011	2012	2013	2014	2015	2016	2017
■ Google	93%	94%	92%	94%	92%	91%	96%	98%
■ Yahoo!	4%	2%	2%	3%	2%	3%	2%	0%
■ Bing	1%	1%	1%	2%	1%	1%	1%	1%
■ AOL	0%	0%	1%	0%	2%	1%	0%	0%

During your undergraduate or graduate school experience, did you use your mobile phone to access a library catalog or other library service?



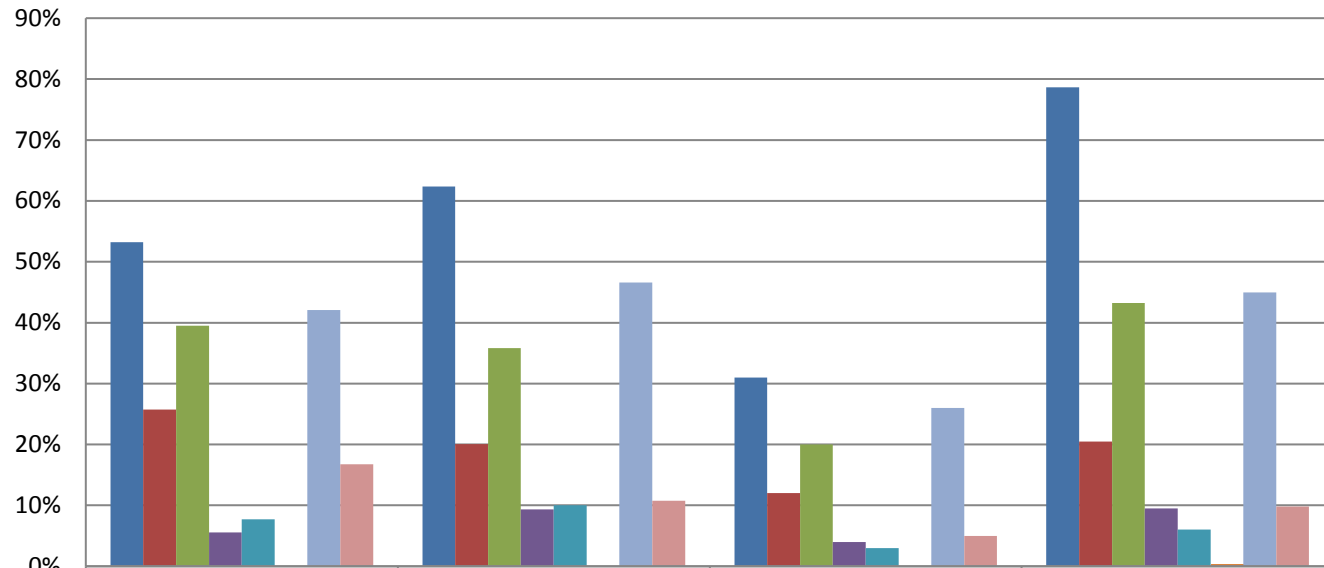
2017 data only.

During your undergraduate or graduate school experience, did you take out or borrow any e-books, using any type of device, from your institution's library?

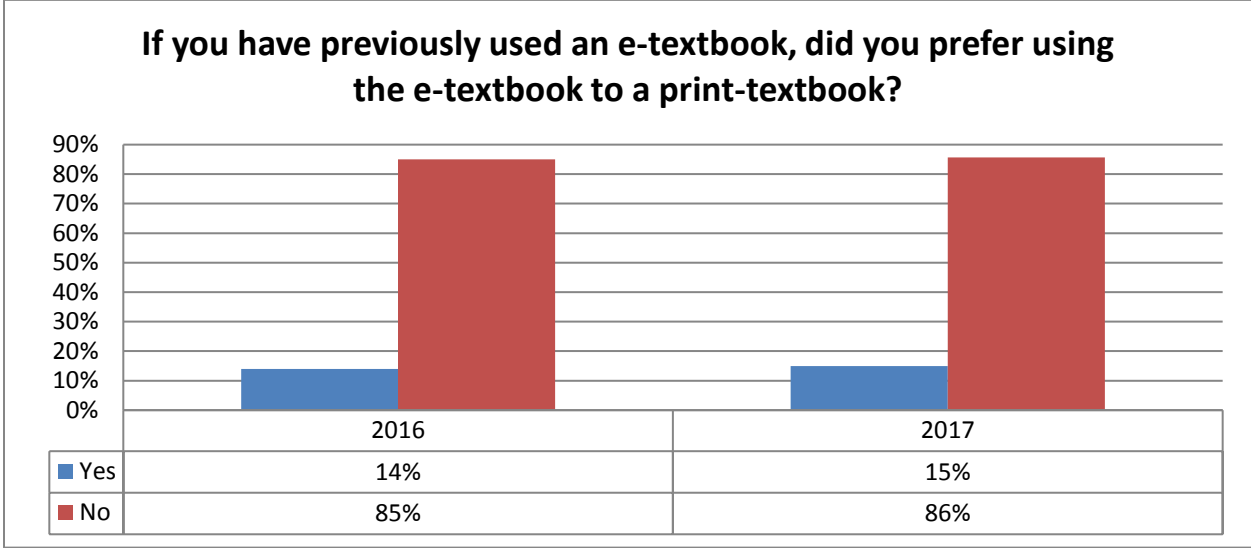
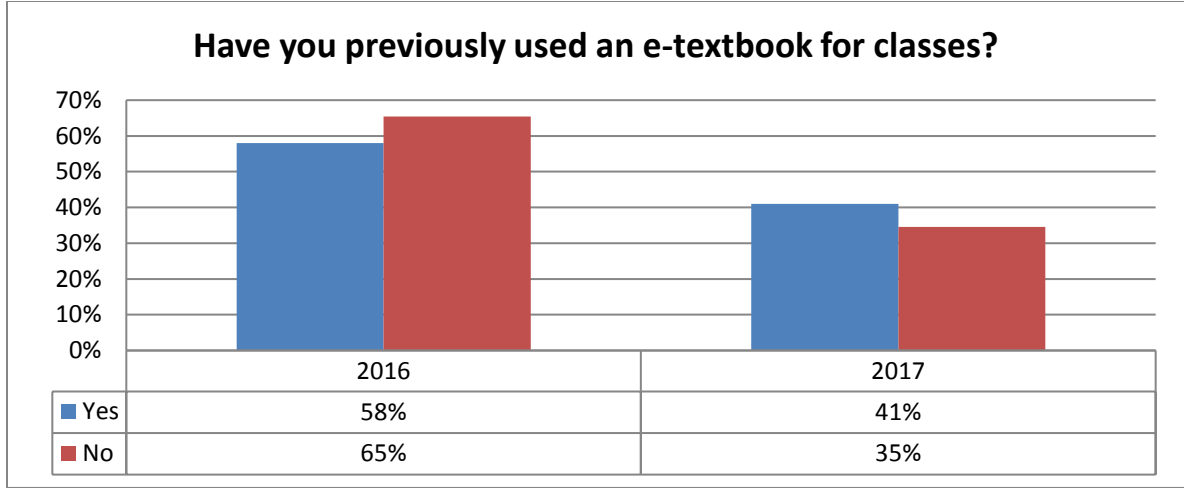


2017 data only.

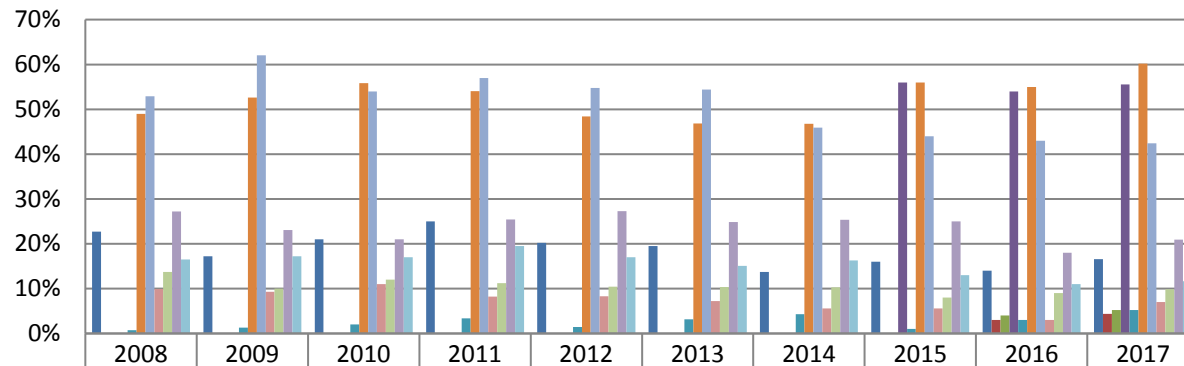
Please specify each of the following devices that you used to read/view ebooks



	2014	2015	2016	2017
■ Desktop/Laptop	53%	62%	31%	79%
■ Kindle	26%	20%	12%	20%
■ iPad	39%	36%	20%	43%
■ Tablet other than iPad	6%	9%	4%	10%
■ Nook	8%	10%	3%	6%
■ Sony Reader			0%	0%
■ Smartphone	42%	47%	26%	45%
■ None	17%	11%	5%	10%

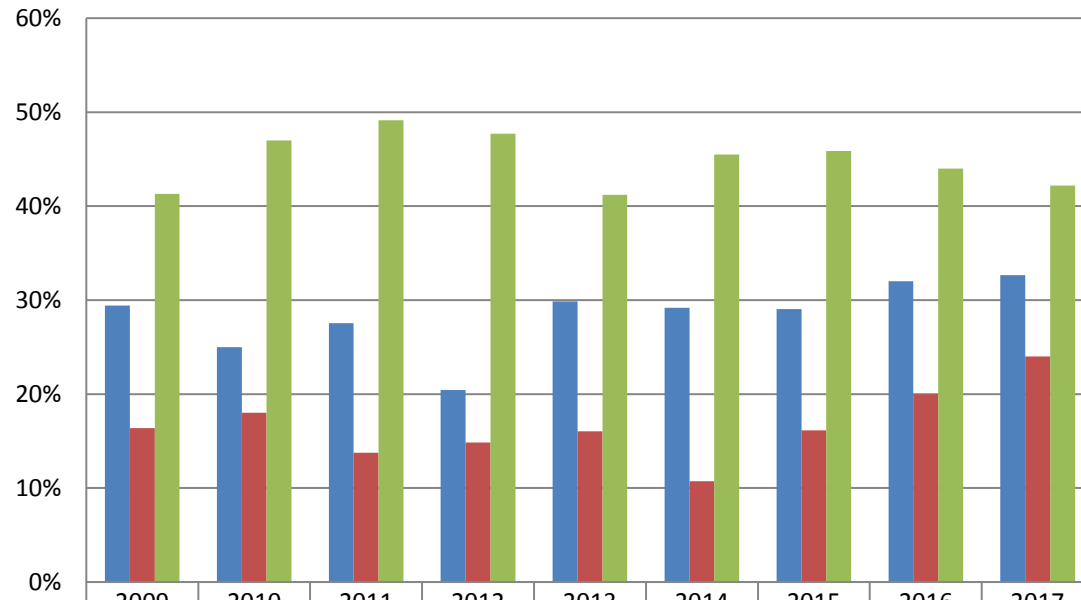


**Which of the following online databases have you used prior to law school?
(Select all that apply.)**



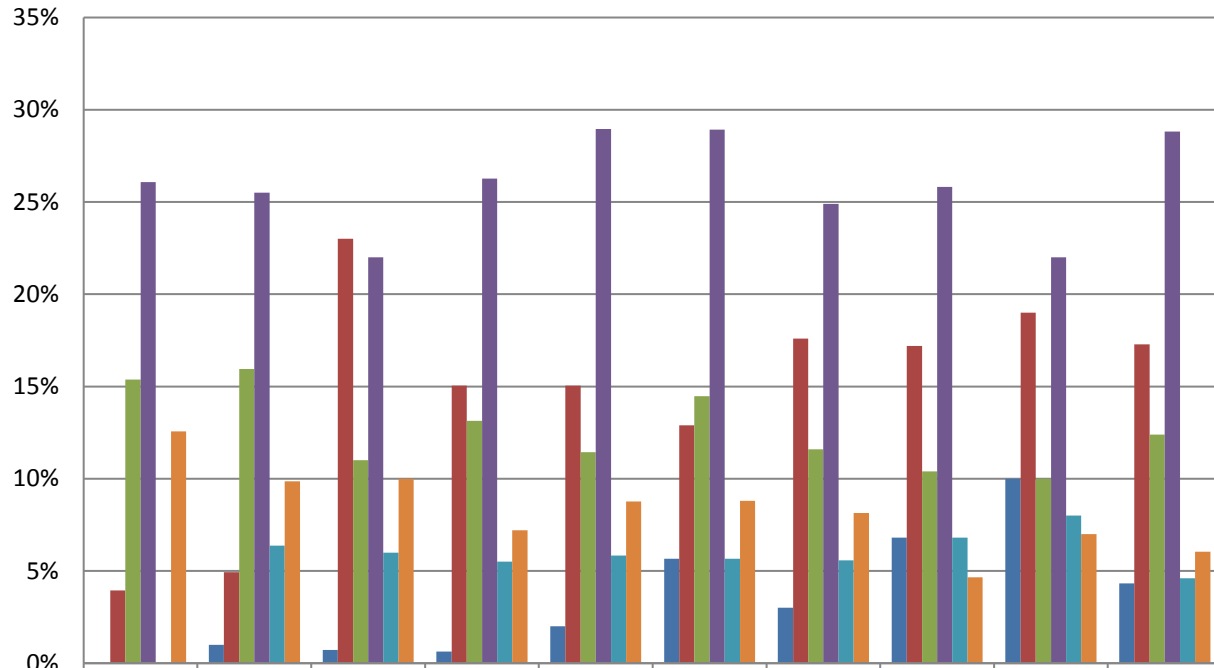
	2008	2009	2010	2011	2012	2013	2014	2015	2016	2017
Academic Search Premier	23%	17%	21%	25%	20%	19%	14%	16%	14%	17%
Bloomberg BNA									3%	4%
Bloomberg Law									4%	5%
Google Scholar						0%	0%	56%	54%	56%
HeinOnline	1%	1%	2%	3%	1%	3%	4%	1%	3%	5%
JSTOR	49%	53%	56%	54%	48%	47%	47%	56%	55%	60%
LexisNexis	53%	62%	54%	57%	55%	54%	46%	44%	43%	42%
Project MUSE	10%	9%	11%	8%	8%	7%	6%	6%	3%	7%
PsychINFO	14%	10%	12%	11%	10%	10%	10%	8%	9%	10%
Westlaw	27%	23%	21%	25%	27%	25%	25%	25%	18%	21%
None	17%	17%	17%	19%	17%	15%	16%	13%	11%	12%

Within the past year, have you downloaded or listened to:



	2009	2010	2011	2012	2013	2014	2015	2016	2017
■ 1-5 podcasts	29%	25%	28%	20%	30%	29%	29%	32%	33%
■ More than 5 podcasts	16%	18%	14%	15%	16%	11%	16%	20%	24%
■ No podcasts	41%	47%	49%	48%	41%	45%	46%	44%	42%

What is your favorite pizza topping?



	2008	2009	2010	2011	2012	2013	2014	2015	2016	2017
■ Bacon		1%	1%	1%	2%	6%	3%	7%	10%	4%
■ Extra Cheese	4%	5%	23%	15%	15%	13%	18%	17%	19%	17%
■ Mushrooms	15%	16%	11%	13%	11%	14%	12%	10%	10%	12%
■ Pepperoni	26%	26%	22%	26%	29%	29%	25%	26%	22%	29%
■ Sausage		6%	6%	6%	6%	6%	6%	7%	8%	5%
■ The Works	13%	10%	10%	7%	9%	9%	8%	5%	7%	6%